

Master Controller unit Metro Mallorca

7875010091 (CD5B78EQ01)

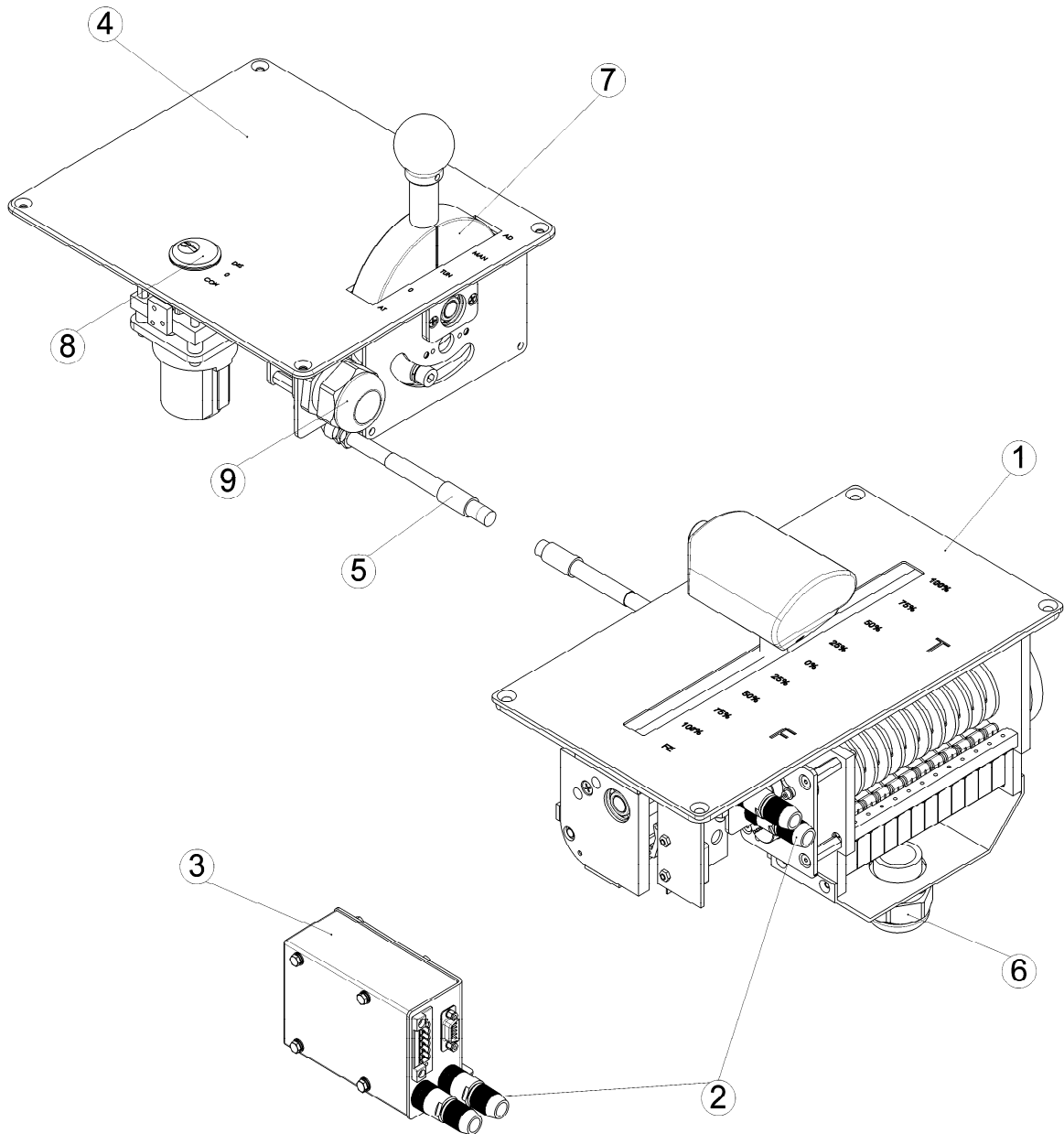
According to dimensioned drawing

M 4390 (Reverser Switch)

T 1011(Flex ball)

1 GENERAL DESCRIPTION

1.1 Illustration



Application

The reverser switch is included in a customized Master Control Unit according to specification no. 618585, which is used to control the traction and brake effort of a rail vehicle.

This Mode selector switch has a flexible connecting element, serving for the mechanical interlocking between the Power-/ Brake Controller and the Mode selector Switch in this Unit.

General Description

Mode- /selector switch

The separate Mode- / selector switch module is located at the left hand side of the Power- / brake controller. It includes a control lever to select the driving direction and/ or driving mode. It also includes a key switch to activate the whole Master control unit. All binary signals (switches) are wired up to a connector that is located at the end of a breakout cable.

Interlocking mechanism

Between the mode selector handle, the key switch and the power-/ brake controller a mechanical interlocking system is installed. This interlocking mechanism serves the purpose of avoiding erroneous operation of these components. Whether or not a component is interlocked depends on the position of the other components.

To provide the mechanical interlocking between the separated Power- / brake controller and Mode selector switch a flexible connecting element (called Flexball) is used.

operating temperature range-5°C to +40°C

maximum humidity during operation95%

power supply voltage.....110 VDC (+25% / -30%)

Including:

Shock- and vibration test according to IEC 61373

EMC test according toEN 50 121-3-2

Voltage withstand test .. acc. to EN 50155 §12.2.9.2 – 50 Hz, 1kV, 1 min