

# Palm grip B32



The palm grip B32 has different equipment options for many requirements. It is compatible with our multi-axis controller or mounted on hydraulic drives. The palm grip has a highly flexible single wire (0,1 mm<sup>2</sup>, 450 mm long). The mounting piece for the drive rod can be supplied with a tapped hole 12 mm (standard) or 10 mm.

## Technical data

Operating temperature	-40°C to +85°C
Degree of protection	Control element up to IP67
Contact complement	1,5A 24 V DC 13 (*1 0,1A 24 V DC13)



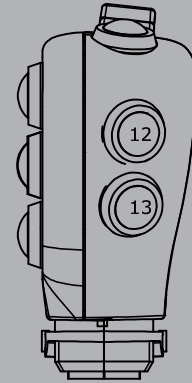
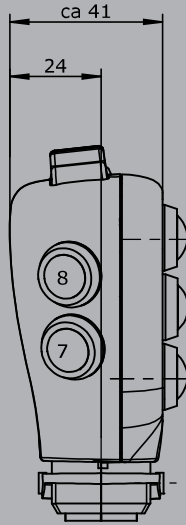
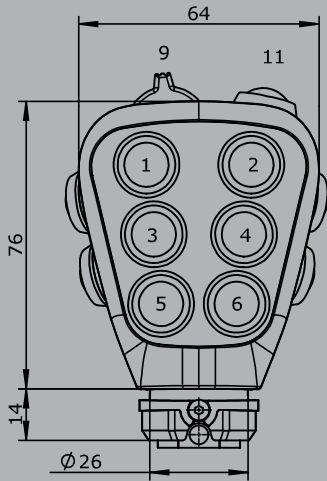
2

Example

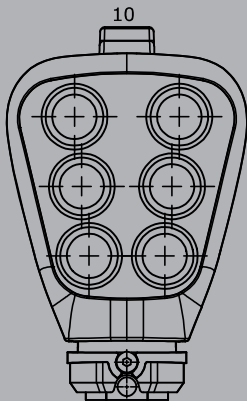
	B32L	-2D	W	SE	S12	-X
<b>Basic unit</b>						
B32L	PalM grip left					
B32R	PalM grip right					
<b>Digitale actuating element</b>						
D	Push button KDA21 *1 Colour: red, black, yellow, green, blue, white, orange					
HD	Hall-push button (see page 154)					
W	Rocker switch T-0-T, Colour: red, black, yellow, blue, white					
W	Rocker switch 0-T, Colour: red, black, yellow, blue, white					
W	Rocker switch R-0-T, Colour: red, black, yellow, blue, white					
W	Rocker switch R-0-R, Colour: red, black, yellow, blue, white					
W	Rocker switch 0-R, Colour: red, black, yellow, blue, white					
W	Rocker switch R-R, Colour: red, black, yellow, blue, white					
SE	Sensor button capacitive with external control electronics					
S	Sensor button capacitive without external control electronics (Consistent with V85 / VV85 with interface E1xx to E6xx, E907 and V25/V27 with interfaces E3xx + E4xx)					
<b>Analog actuating element</b>						
S12	Hall-Thumb rocker (see page 100) Output 0,5...2,5...4,5 V inverse dual					
V21	Hall-mini joystick (see page 45) Output 0,5...2,5...4,5 V inverse dual					
<b>Special model</b>						
X	Special / customer specified					

**B32**

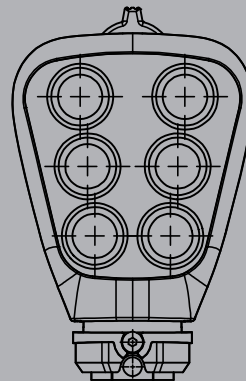
Push button  
installed Pos. 1 - 8, 11 - 13  
Rocker switch  
installed Pos.9



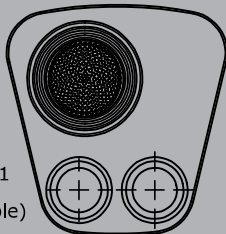
Push button  
installed Pos. 1 - 8, 12 + 13  
Rocker switch lengthwise  
installed Pos. 10



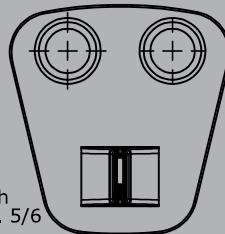
Rocker switch crosswise  
installed Pos. 10



Edition:  
Multi-axis controller V21  
installed Pos. 1/3  
(Pos. 9 - 11 not available)



Edition:  
Rocker switch  
installed Pos. 5/6



Edition:  
Rocker switch  
installed Pos.1/3 + 2/4  
(Pos. 9 - 11 not available)

