

Multi-axis controller V14



The multi-axis controller V14 is a robust switching device for remote control and electro-hydraulic applications. The modular design enables the switching device to be used universally. The V14 is resistant to oil, maritime conditions e.g. offshore / vessels, UV radiation typically from the sun.

Technical data

Mechanical life V14	6 million operating cycles
Operation temperature	-40°C to +85°C
Degree of protection	up to IP65



	V14L	S8	P	T	Example				
					-01 Z C	+03 R	-A05 C61	+A110	-X
Basic unit	V14L 2-axis left								
Control-handle extended		Standard 60 mm** S8 +20 mm <i>*Only available in combination with handle!</i>							
Gate			P Cross gate						
Grip / Palm grip				T Dead man					
Axis 1 (direction 1-2)									
	01 2 contacts (2A 250 V AC15)								
	Z Spring return								
	C Mechanical encoder								
Axis 2 (direction 3-4)									
	03 6 contacts (2A 250 V AC15)								
	R Friction brake								
Description axis 1 (direction 1-2)									
	A05 Arrangement MSP21								
	C61 Mechanical encoder MEC 1-2								
Description axis 2 (direction 3-4)									
	A110 Arrangement MS24-0								
Special model									
	X Special / customer specified								

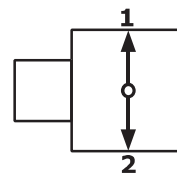
Combination possibilities with our handles



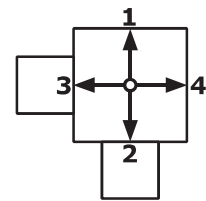
1

	V14L	S8	P	T	-	01 Z C	+	03 R	-	A05	C61	+	A110	-	X
Basic unit															
V14.1L	1-axis left														
V14.1R	1-axis right														
V14L	2-axis left														
V14R	2-axis right														
Control-handle extended															
	Standard 60mm*														
S8	+20 mm														
*Only available in combination with handle!															
Gate															
P	Cross gate														
P X	Special gate														
Grip / palm grip															
	Knob 25 mm (standard)														
M	Mechanical zero interlock														
MH	Mechanical zero interlock + signal contact														
T	Dead man														
H	Signal button														
GK1	Knob 42 mm														
GK1M	Mechanical zero interlock														
GK1MN	Mechanical zero interlock (push down)														
GK1T	Dead man														
GK1H	Signal button														
GK1MH	Mechanical zero interlock + signal contact														
GK1D	Push button														
GK1DV	Flush push button														
GS9	Hall-twist grip with spring return														
GS9-D	Hall-twist grip with spring return and push button on top														
B...	Palm grip B... (see page palm grip page 157)														

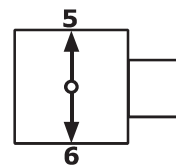
Identification of the installation variants with switching directions:



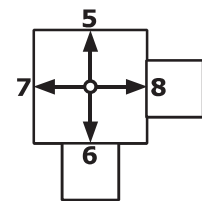
V14.1L



V14L



V14.1R



V14R

*Attention! The multi-axis controller V14 is not suitable for large palm grips (B3, B7/B8, B9...)

	V14L	S8	P	T	-	01 Z C	+	03 R	-	A05	C61	+	A110	-	X
Axis 1: direction 1-2 left / direction 5-6 right															
(Standard contacts gold-plated 2A 250V AC15)															
01	2 contacts	Standard contact - arrangement see page 140													
02	4 contacts	e.g.													
03	6 contacts	A05 MS21													
		A0500 MS21-00													
		A110 MS24-0													
A99 contact - arrangement according customer request															

Technical details may vary based on configuration or application! Technical data subject to change without notice!

V14L S8 P T - 01 Z C + 03 R - A05 C61 + A110 - X

Z Spring return *(included in basic unit!)*

R Friction brake

C Mechanical encoder

C61	MEC 1-2		
	EA/02-10	I max. 1 mA	
	Potentiometer track	2 x 10 kOhm	
	Direction tack	Arrangement MS26-0	
C62	MEC 1-7		
	EA/10-10	I max. 1 mA	
	Potentiometer track	2 x 5 kOhm	
	Direction track	Arrangement MS26-0-1	
C66	MEC 1-10		
	EA/17-10	I max. 10 mA	
	Potentiometer track	2 x 1,5 kOhm	
	Direction track	Arrangement MS21-0+MS21	
C63	MEC 1-6		
	EA/09-10		
	6 Bit Gray Code		
C64	MEC 1-6-5		
	ER/36-10	Us=18-30 V	
	Current output 20...4...20 mA		
C65	MEC 1-6-8		
	ER/36-12	Us=18-30 V	
	Current output 20...0...20 mA		
C67	MEC 1-6-9		
	ER/36-11	Us=18-30 V	
	Voltage output 10...0...10 V		

H Hall-Potentiometer

E14811

0,5...2,5...4,5 V / 4,5...2,5...0,5 V

V14L S8 P T - 01 Z C + 03 R - A05 C61 + A110 - X

Axis 2: direction 3-4 left / direction 7-8 right

(not applied for V14.1L and V14.1R)

See description axis 1!

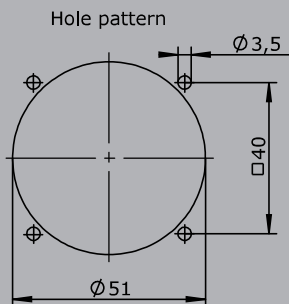
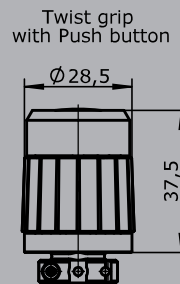
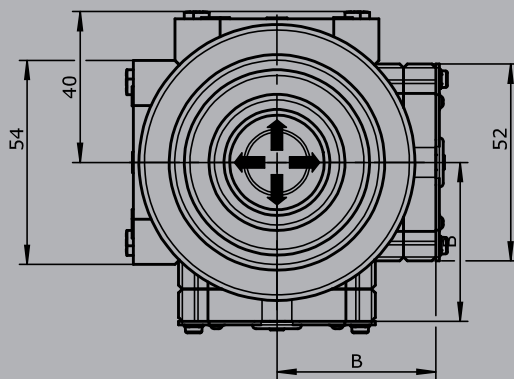
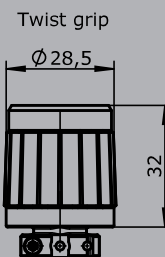
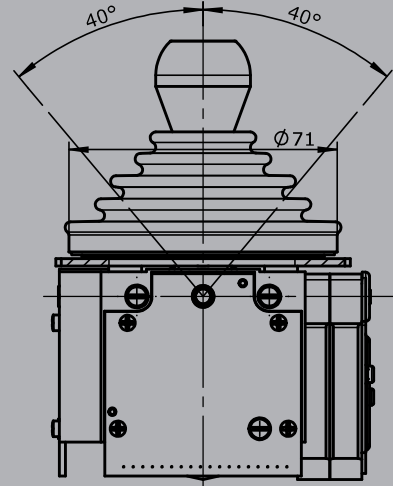
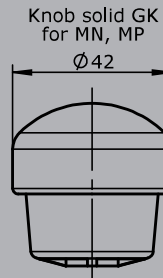
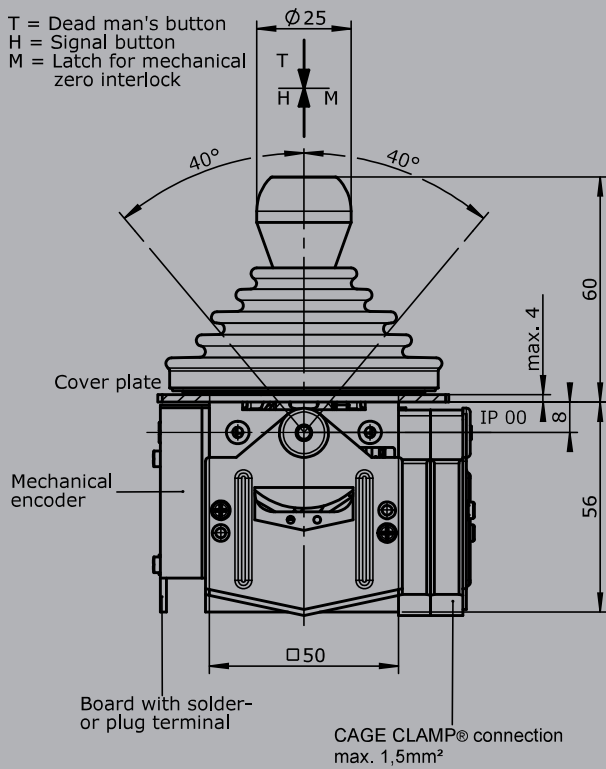
Special model

X Special / customer specified

1

1

T = Dead man's button
H = Signal button
M = Latch for mechanical zero interlock



Type	No. of contacts	Dim.
01	2	36
02	4	45
03	6	54