

Multi-axis controller V11



The multi-axis controller V11 is a robust switching device for crane and hoisting applications. The modular design enables the switching device to be used universally. The V11 is resistant to oil, maritime conditions e.g. offshore / vessels, UV radiation typically from the sun.

Technical data

Mechanical life	10 million operating cycles
Operation temperature	-40°C to +85°C
Degree of protection	up to IP54 front



Example

	V11L	S5	P	T	-01 Z P	+03A R	-A05 P324	+A110	-X
Basic unit									
V11L 2-axis left									
Control-handle extended									
S5 -20 mm									
Gate									
P Cross gate									
Grip / palm grip									
T Dead man									
Axis 1 (direction 1-2)									
01 2 contacts (2A 250 V AC15)									
Z Spring return									
P Potentiometer									
Axis 2 (direction 3-4)									
03A 6 contacts (4A 250 V AC15)									
R Friction brake									
Description axis 1 (direction 1-2)									
A05 Arrangement MS21									
P324 Potentiometer T365 2 x 5 kOhm									
Description axis 2 (direction 3-4)									
A110 Arrangement MS24-0									
Special model									
X Special / customer specified									

Combination possibilities with our handles



V11L S5 P T - 01 Z P + 03A R P - A05 P324 + A110 P325 - X

Basic unit

V11L	2-axis left
V11R	2-axis right
V11.1L	1-axis left
V11.1R	1-axis right

Control-handle extended

	Standard 120 mm*
S5	-20 mm
S8	+20 mm

*Only available in combination with handle!

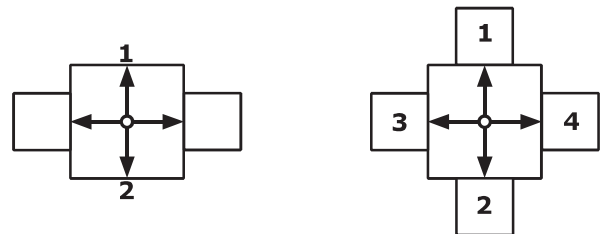
Gate

P	Cross gate
P X	Special gate

Grip / palm grip

	Knob (included in basic unit!)
M	Mechanical zero interlock
MN	Mechanical zero interlock (push down)
T	Dead man
H	Signal button
D	Push button
DV	Flush push button
B...	Palm grip B... (see page palm grip 157)

Identification of the installation variants with switching directions:



V11.1

V11

V11L S5 P T - 01 Z P + 03A R P - A05 P324 + A110 P325 - X

Axis 1: direction 1-2 left / direction 5-6 right			
(Standard contacts gold-plated 2A 250 V AC15)			
01	<input type="checkbox"/>	2 contacts	Standard contact - arrangement see page 140
02	<input type="checkbox"/>	4 contacts	e.g.
03	<input type="checkbox"/>	6 contacts	A980 MS00 A05 MS21 A0500 MS21-00 A110 MS24-0 (Max. 4 steps per switching direction possible!)
<input checked="" type="checkbox"/>		Silver contacts (4A 250 V AC15)	A99 contact - arrangement according customer request
Z	Spring return		
R	Friction brake		
(P) Possibility of mounting potentiometer and encoder (Gessmann-types)			
P	Potentiometer		
	P324	T365 2 x 5 kOhm	I max. 1 mA
	P325	T365 2 x 10 kOhm	I max. 1 mA
<i>More potentiometers on request!</i>			
C	Encoder C... Encoder see page 146		

V11L S5 P T - 01 Z P + 03A R P - A05 P324 + A110 P325 - X

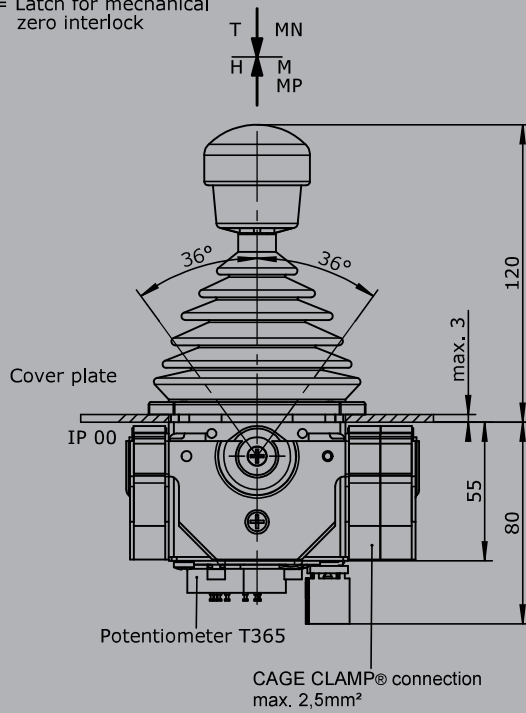
Axis 2: direction 3-4 left / direction 7-8 right			
(Standard contacts gold-plated 2A 250 V AC15)			
01	<input type="checkbox"/>	2 contacts (2A 250V AC15)	Standard contact - arrangement see page 140
02	<input type="checkbox"/>	4 contacts (2A 250V AC15)	z.B.
03	<input type="checkbox"/>	6 contacts (2A 250V AC15)	A980 MS00 A05 MS21 A0500 MS21-00 A110 MS24-0 (Max. 4 steps per switching direction possible!)
<input checked="" type="checkbox"/>		Silver contacts (4A 250 V AC15)	A99 contact - arrangement according customer request
Z	Spring return		
R	Friction brake		
(P) Possibility of mounting potentiometer and encoder (Gessmann-types)			
P	Potentiometer		
	P324	T365 2 x 5 kOhm	I max. 1 mA
	P325	T365 2 x 10 kOhm	I max. 1 mA
<i>More potentiometers on request!</i>			
C	Encoder C... Encoder see page 146		

V11L S5 P T - 01 Z P + 03A R P - A05 P324 + A110 P325 - X

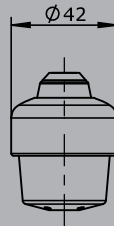
Special model	
X	Special / customer specified

Attachments	
	Indicating labels
	Indicating labels with engraving

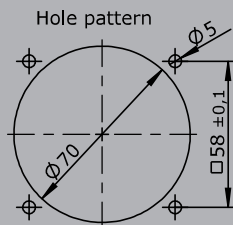
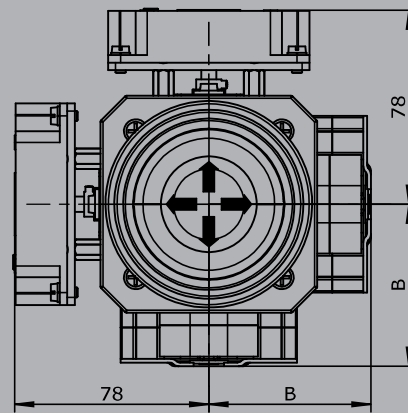
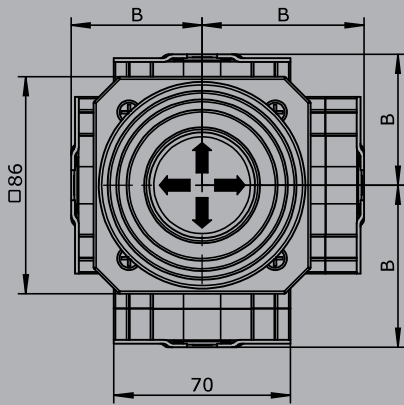
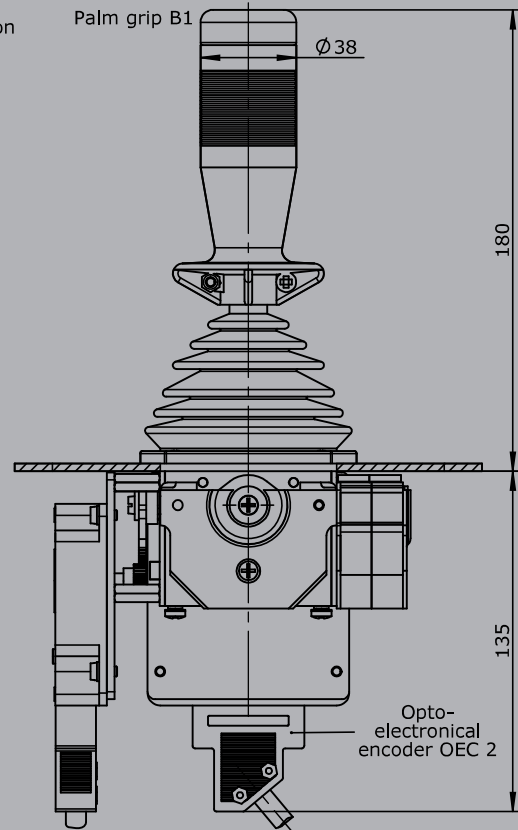
T = Dead man's button
H = Signalbutton
M = Latch for mechanical zero interlock



Knob solid
D= Push button



Palm grip B1



Type	No. of contacts	Dim. B
01	2	51
02	4	64
03	6	76

