

Single-axis controller S23



The single-axis controller S23 is a robust switching device for shipbuilding and electro-hydraulic applications. The modular design of the switching device is universally applicable. The single-axis controller is resistant to oil, maritime conditions e.g. offshore /vessels, UV radiation typically from the sun.

Technical data

Mechanical life S23	6 million operating cycles
Operating temperature	-40°C to +85°C
Degree of protection	IP65



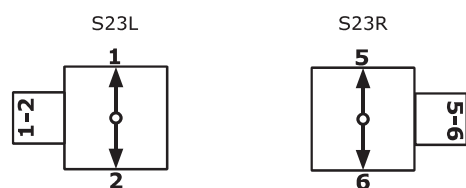
Example

	S23L	S5	M	- 3 Z P	- A050 P134	- X
Basic unit						
S23L left						
Control-handle extended						
S5 -20 mm						
Grip / palm grip						
M Mechanical zero interlock						
Axis 1 (direction 1-2)						
3 3 contacts (2A 250 V AC15)						
Z Spring return						
P Potentiometer						
Description axis 1 (direction 1-2)						
A050 Arrangement MSP21-0						
P134 Potentiometer T396 2 x 5 kOhm						
Special model						
X Special / customer specified						

	S23L	S5
Basic unit		
S23L left		
S23R right		
Control-handle extended		
Standard 140 mm		
S5 -20 mm		
S8 +20 mm		

M - 3 Z P - A050 P134 - X

Identification of the installation variants with switching directions:



S23L S5 M - 3 Z P - A050 P134 - X

Grip / palm grip

	Knob (standard)
M	Mechanical zero interlock
Q	T-grip
QM	T-grip with mechanical zero interlock

S23L S5 M - 3 Z P - A050 P134 - X

Axis 1: direction 1-2 left / direction 5-6 right

1	1 contact	Standard contact - arrangement see page 140		
2	2 contacts	z.B.		
3	3 contacts	A98	MS0	
4	4 contacts	A05	MS21	
		A0500	MS21-00	
		<i>A99 contact - arrangement according customer request</i>		
Z	Spring return			
R	Friction brake			
(P)	Possibility of mounting potentiometer and encoder (Gessmann-types)			
P	Potentiometer	P131	T396 2 x 0,5 kOhm	I max. 1 mA
		P132	T396 2 x 1 kOhm	I max. 1 mA
		P133	T396 2 x 2 kOhm	I max. 1 mA
		P134	T396 2 x 5 kOhm	I max. 1 mA
		P135	T396 2 x 10 kOhm	I max. 1 mA
		<i>More potentiometers on request!</i>		
C	Encoder	C... Encoder see page 146		

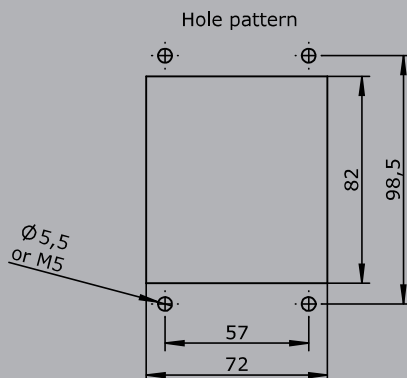
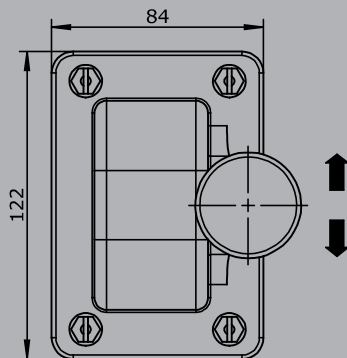
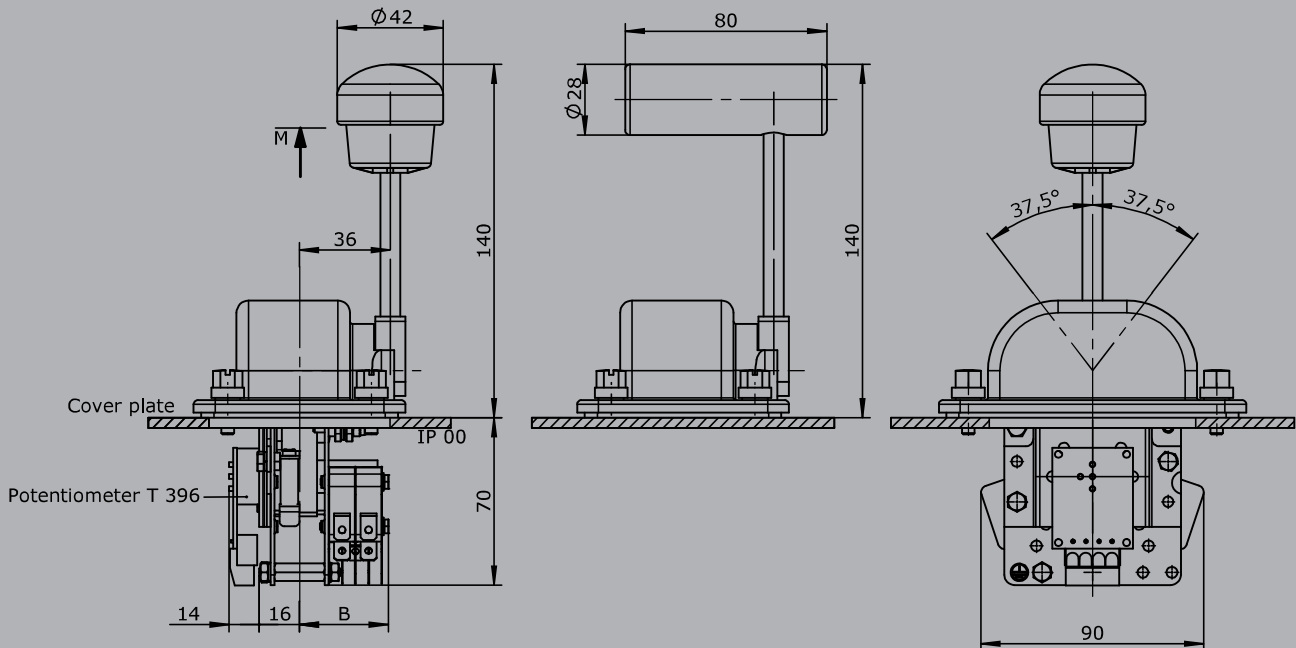
S23L S5 M - 3 Z P - A050 P134 - X

Special model

X	Special / customer specified
---	------------------------------

M = Latch for mechanical zero interlock

T - grip



Type	No. of contacts	Dim. B
1	1	25
2	2	31
3	3	36
4	4	42